

TRINOCULAR UPRIGHT RESEARCH STEREO ZOOM MICROSCOPE



SZB-75A

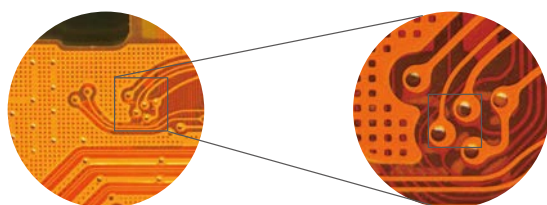


SZB-75A



Eyepiece for clear image

SZX12 with 10X/23mm eyepiece for wider field, is available for bright and clear image at edge. What's more, 15X and 20X eyepieces for option, meets the demand of high power. Eyepiece diopter is adjustable for different eyesights.



1X

3X





SZB-75A



High eye-point wide field eyepiece for clear image

SZB-75A with 10X/23mm eyepiece for wider field, is available for bright and clear image at edge. What's more, 15X and 20X eyepieces for option, meets the demand of high power.

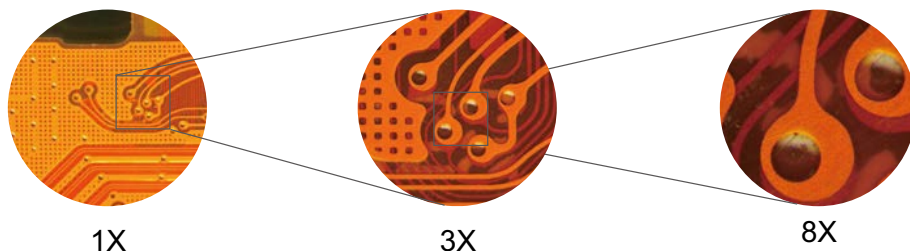
Eyepiece diopter is adjustable

Coaxial coarse and fine focusing mechanism for fast operation

SZB-75A with Coaxial mechanism is available to be fast focused, and lockable for longterm observation. Focusing knob with comfortable hand feel, release the fatigue from long time operation.

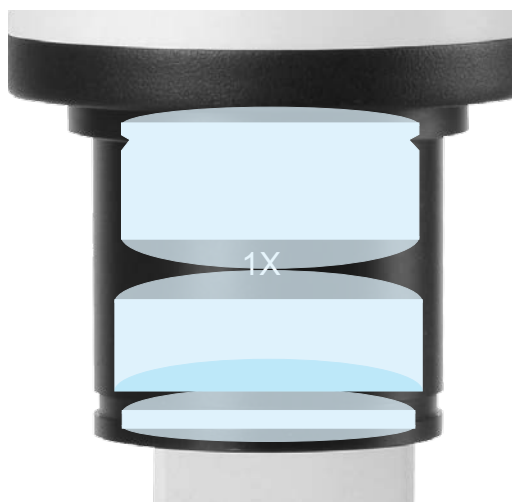
Tilting viewing head for comfortable operation

SZB-75 with tilting viewing head from 5 to 45 degree, can be flexibly adjusted for different operators with different posture.



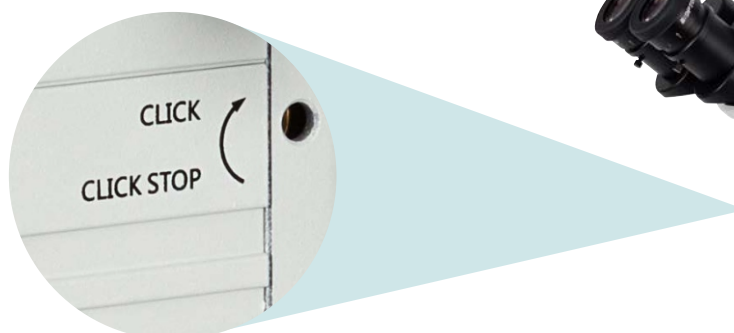
Large zoom ratio 12.5:1

SZB-75A has large zoom ratio from 0.63X to 8X, with click stop for every main time, which can be manually unbind for zoom magnifying smoothly.

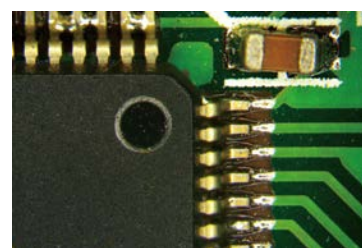
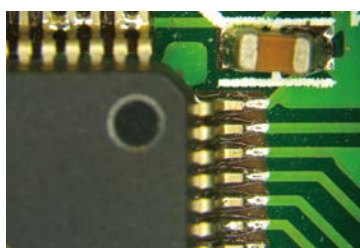


Apochromatic objective

Apochromatic design significantly improves the lens performance of color rendition. Correcting the axial chromatic aberration of red/green/blue/purple, and converge them on a focal plane, the objective is able to present the real color of the samples.



Shift the aperture diaphragm in front to adjust depth of field for high-quality image.





SZB-75A

Rich experience in R&D, creates the unique microscope with reliable quality.



With Galileo optical system, presents super definition

Adopt Galileo optical design to achieve plan and high definition micro-image, meet the demand of scientific research.

Adjustable arm stand

Except for the 50mm coarse focusing distance, the focus holder is able to be lifted by adjusting lock screw. It is available to detect large sample.

Forearm holde

Compact and streamlined holder to support forearm, reduce the fatigue of arm and shoulder from long-time operation.

Mirror adjustment

Reflected mirror in the base, is 360 degree rotatable to control the light zone. With plan side and frosted side for different imaging effect, is suitable for various applications.





SZB-75A

Eyepiece	10X / 23mm		15X / 16mm		20X / 12mm	
Main objective	magnification	field of view (mm)	magnification	field of view (mm)	magnification	field of view (mm)
0.5x	3.15x-40x	69.84-5.5	4.73x-60x	50.79-4.0	6.3x-80x	38.10-3.0
1.0x	6.3x-80x	34.92-2.75	9.45x-120x	25.40-2.0	12.6x-160x	19.05-1.5
1.5x	9.45x-120x	23.28-1.83	14.18x-180x	16.93-1.33	18.9x-240x	12.70-1.0
2.0x	12.6x-160x	17.46-1.38	18.9x-240x	12.70-1.0	25.2x-320x	9.52-0.75

Body: Rugged, 360° ergonomic design, touch point treated, anti mould, anti-electrostatic, acid-resistant texture painted, rubber feet & stage clips, Built-in as zoom body, zoom drive system with horizontal handle for click-stop for various positions incorporated.

Optical System: APO chromatic, parallel optics zoom system, lead free, resolution upto 900 lines per mm, distortion free infinity, common main objective.

Standard Zoom Lens: Zoom range: 0.8X~10X, zoom ratio: 12.5: 1; built-in aperture diaphragm; click stop for 0.8X, 1X, 1.5X, 2X, 3X, 4X, 5X, 6X, 8X, 10X

Zoom range: 0.8X~10X, zoom ratio: 12.5 : 1, built-in aperture diaphragm; click stop for 0.8X, 1X, 1.5X, 2X, 3X, 4X, 5X, 6X, 8X, 10X

Zoom ratio: 12.5:1

Eyepieces: High eye point, wide field plan eyepiece WF 10X, FOV-23mm, multilayered coated, high quality, good contrast, abrasion free, aplanatic, lockable, diopter adjustment (± 5) on one/both eyepieces with rubber eye guard (suitable for eyeglass wearer)

Objective: 1X main objective, working distance 78mm

Viewing head: 30° inclined trinocular head, 2 position beam splitter 50: 50, 100:0 interpupillary distance 50-76mm; fixed eyepiece tube with lock screw.

Focusing: Coarse and fine coaxial focus system, integrated body with focus holder, coarse range: 50mm, fine precision 0.002mm

Illumination: 5W LED light box (size: 270X100X130mm) with single fiber (500mm), color temperature 5000-5500K operating voltage 100-240VAC/50-60Hz, output 12V Illumination.

Power: Light Intensity control and lamp ON/OFF control by external signal (DC0-5V), mechanical adjustment function, power 150W (350VA), rated voltage 100-120V/220-240V/50/60 Hz.

Accessories: Cleaning cloth, Vinyl cover, Instruction manual, Warranty card, Power Cord (Country Specific)

Warranty: 2 Years

Certifications: ISO, BIS, USFDA, CE, European CE, etc.

