



# PZQ-105MINI

## Mini Inverted Tissue Culture Microscope

- Cordless Power Free For Kids Use Outdoors In Any Place
- Complete Accessories Incl. Mobile Phone Holder & All Experiment Tools
- Inverted Design To Watch Both Prepared Slide & Live Cell In Glass Bottle
- Long Working Distance Objectives 4x10x20x Supply Magnification 40x~320x
- **Magnification:** 40x ~ 320xOptical
- **System:** Inverted Achromatic, Long Working Distance
- **Head:** Monocular Head Inclined 45°
- **Eyepiece Tube:** Inner Diameter 23.2mm
- **Eyepieces:** WF10x/14mm, WF16x/9mm
- **Nosepiece:** Triple
- **Objective:** 4x, 10x, 20x
- **Focusing:** Coarse Focus Knob
- **Working Stage:** Single Layer Round Stage, Diameter 118mm, with Clip
- **Condenser:** Long Working Distance Abbe Condenser, N.A. 0.19, with Filter Slot
- **Light Source:** Transmit Light 0.5W LED, Brightness Adjustable
- **Power:** Cordless, Powered by 3x AA 1.5V Batteries (Batteries NOT Included for Air Shipment)
- **Learning Accessories Kit:**  
Universal Mobile Phone Holder, Prepared Slides: 5, Blank Slides \*7 Slide Cover \*7, Slide Sticker \*7, Plastic Tweezers, Plastic Petri Dish, Plastic Spatula, Plastic Sample Bottle 2





# MVV-3000

## 3.0 Mega Pixel Camera

(USB 2.0)

- Eyepiece Camera Microscopy Imaging Solution
- 2048\*1536 CMOS Professional Sensor
- Built In Relay Lens To Widen Field

### Features:

- Built-in relay lens to widen field and to have image sharp and bright.
- Compatibility with Windows and MAC.
- Copyright software with 8 languages version.
- Camera house: compact and light-weight round-shaped shell.
- Real active resolution, no interpolation, no jaggies in picture.
- Easy installation, convenient operation.

### Functions:

- To convert microscope and stereo microscope into digital ones.
- To adjust the gain, resolution, WB, contrast, exposure time, RGB color and Gamma setting.
- To edit pictures and to manage files of pictures and movies.
- To capture images for living show, for shoot and for video recording.

### Specifications:

- **Capture Mode:** Picture and Video
- **Sensor Parameter:** 3.0MP
- **Active Pixels:** 2048 x 1536
- **Responsivity:** 1.4V/lux-sec
- **Dynamic Range:** 70.1dB
- **S/N Ratio:** 38.1dB
- **Spectral Range:** 400-650nm (with IR-filter)
- **Frame Rate:** 15fps @ 2048 x 1536
- **Preview Model:** 2048x1536, 1600x1200, 1280x1024, 800x600, 640x480, 352x288, 320x240
- **Exposure:** ERS or Manual
- **Power Consumption:** 381mW
- **White Balance:** Auto and Manual
- **Eyepiece Adapter Size:** 23.2mm, 30.0mm
- **Power Supply:** USB 2.0 Powered
- **Device Weight:** 0.09kg
- **Device Size:**  $\Phi 74.00\text{mm} \times 97.00\text{mm}$
- **Cable Length:** 1.5m
- **Function of Software:** Image & Video Capture, Edit, and Management
- **Image format:** JPEG





# MVV-5000

## 5.0 Mega Pixel Camera

(USB 2.0)

- Eyepiece Camera Microscopy Imaging Solution
- 2592\*1499 CMOS Professional Sensor
- Built In Relay Lens To Widen Field

### Features:

- Built-in relay lens to widen field and to have image sharp and bright.
- Compatibility with Windows and MAC.
- Copyright software with 8 languages version.
- Camera house: compact and light-weight round-shaped shell.
- Real active resolution, no interpolation, no jaggies in picture.
- Easy installation, convenient operation.

### Functions:

- To convert microscope and stereo microscope into digital ones
- To adjust the gain, resolution, WB, contrast, exposure time, RGB color and Gamma setting.
- To edit pictures and to manage files of pictures and movies.
- To capture images for living show, for shoot and for video recording.

### Specifications:

- **Capture Mode:** Picture and Video
- **Sensor Parameter:** 1/2.5" 5.0MP
- **Max. Resolution:** 2592\*1944
- **Pixel Size:** 2.2 $\mu$ m\*2.2 $\mu$ m
- **Responsivity:** 1.4V/lux-sec
- **Dynamic Range:** 70.1dB
- **S/N Ratio:** 38.1dB
- **Spectral Range:** 400-650nm (with IR-filter)
- **Frame Rate:** 10fps@2592\*1944
- **Preview Model:** 2592x1944, 2048x1536, 1600x1200, 1280x1024, 800x600, 640x480, 352x288
- **Exposure:** ERS or Manual
- **Power Consumption:** 381mW
- **White Balance:** Auto and manual
- **Eyepiece Adapter Size:** 23.2mm, 30.0mm
- **Power Supply:** USB 2.0 Powered
- **Device Weight:** 0.09kg
- **Device Size:** 97mm\* $\Phi$ 74mm
- **Cable length:** 1.5m
- **Image format:** JPEG







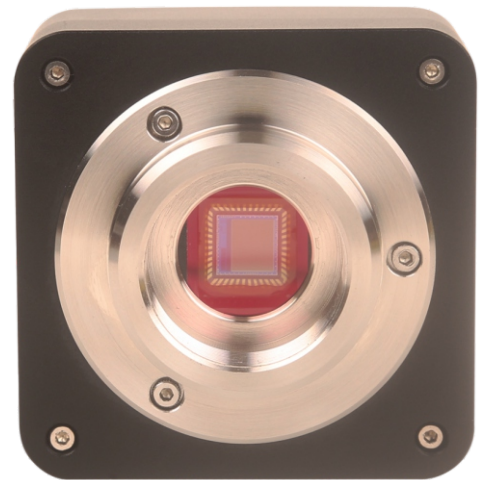
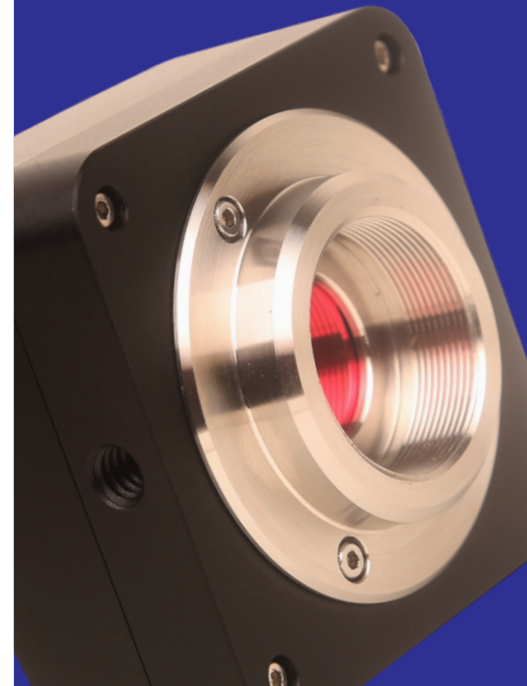
## 5 Mega Pixel Camera (USB 2.0)

### Features:

- Standard C-Mount camera with Aptina CMOS sensor;
- With hardware resolution among 0.35M to 14M;
- Integrated zinc aluminum alloy housing;
- USB2.0 interface ensuring high speed data transmission;
- Ultra-Fine color engine with perfect color reproduction capability;
- With advanced video & image processing application Toup View;
- Windows/Linux/macOS/Android multiple platform SDK;

### Technical Specification:

- **Order Code:** UC-5
- **Sensor & Size(mm):** 5.1M/AR0521, with a size of 1/2.5" (5.70x4.28 mm)
- **Pixel( $\mu\text{m}$ ):** Each pixel measures 2.2x2.2 micrometers
- **G Sensitivity Dark Signal::** 18.8ke-/lux, 73dB, 40dB
- **FPS/Resolution:**
  - > 7.0 frames per second at 2592x1944 resolution
  - > 27.7 frames per second at 1296x972 resolution
  - > 100.5 frames per second at 648x486 resolution
- **Binning:** Supports binning at 1x1, 2x2, and 4x4
- **Exposure:** Exposure time ranges from 0.2 ms to 2000 sec.
- **Image format:** BMP, JPEG, RAW, TIFF, AVI



### Sample Images Captured with ULTRACAM UC-5





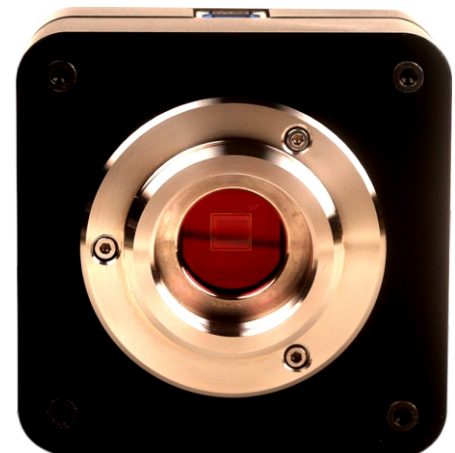
## 10 Mega Pixel Camera (USB 3.0)

### Features:

- Standard C-Mount camera with Aptina CMOS sensor;
- With hardware resolution among 3.0M to 18M;
- Integrated zinc aluminum alloy housing;
- USB3.0 5Gbps interface ensuring high speed data transmission;
- Ultra-Fine color engine with perfect color reproduction capability;
- With advanced video & image processing application ToupView;
- Windows/Linux/macOS/Android multiple platform SDK;

### Technical Specification:

- **Order Code:** UC-10
- **Sensor & Size(mm):** 10M/IMX577©, with a size of 1/2.3" (5.68x4.26)
- **Pixel(μm):** Each pixel measures 1.55x1.55 micrometers
- **G Sensitivity Dark Signal::** 250mv with 1/30s 0.25mv with 1/30s
- **FPS/Resolution:**
  - > 8.5 frames per second at 3664x2748 resolution
  - > 49 frames per second at 1832x1374 resolution
  - > 137 frames per second at 912x686 resolution
- **Binning:** Supports binning at 1x1, 2x2, and 4x4
- **Exposure:** Exposure time ranges from 0.1 ms to 2000 sec.
- **Image format:** BMP, JPEG, RAW, TIFF, AVI



### Sample Images Captured with ULTRACAM UC-10







# 16 Mega Pixel Camera (USB 3.0)

## Features:

- Sony STARVIS 2 back-illuminated CMOS sensor
- 4K HDMI/ NETWORK/ USB multiple video synchronous outputs
- 4K/1080P auto switching according to monitor resolution
- High frame rate output, supporting up to 4K 75fps
- Support 4K 60fps low delay HDMI output mode, with an average delay of 40ms
- SD card/USB flash drive for captured image and video storage, support local preview and playback
- New browsing function, providing rich file operations
- Excellent ISP with local tone mapping and 3D denoising
- Provide two sets of default ISP parameters for biological and stereo microscope
- Embedded XCamView for the control of the camera control, image processing and measurements
- ToupView/ToupLite software for PC
- iOS/Android applications for smart phones or tablets

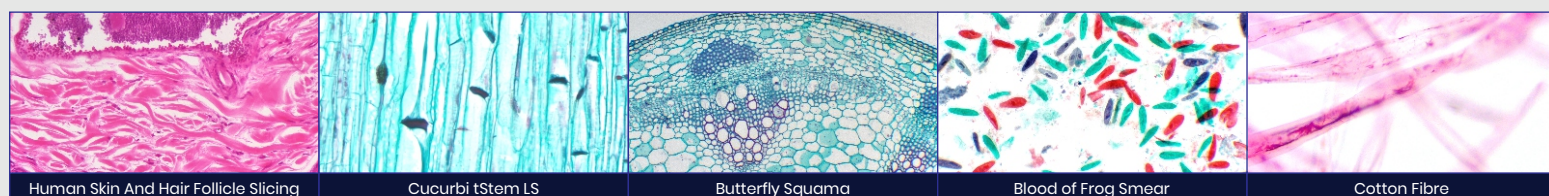
## Technical Specification:

- **Order Code:** UC-16
- **Sensor & Size(mm):** Sony IMX283©, with a size of 1/1.1"(13.06x7.34)
- **Pixel(μm):** Each pixel measures 2.4x2.4 micrometers
- **G Sensitivity Dark Signal::** 1847mv with 1/30s, 0.84mv with 1/30s
- **FPS/Resolution:**
  - > 20 frames per second at 5440x3060 resolution
  - > 30 frames per second at 2688x1512 resolution
  - > 30 frames per second at 1920x1080 resolution
- **Binning:** Supports binning at 1x1
- **Exposure:** Exposure time ranges from 0.104 ms to 1000 sec.
- **Image format:** BMP, JPEG, RAW, TIFF, AVI

# ULTRACAM UC-16



## Sample Images Captured with ULTRACAM UC-16





## 20 Mega Pixel Camera (USB 3.0)

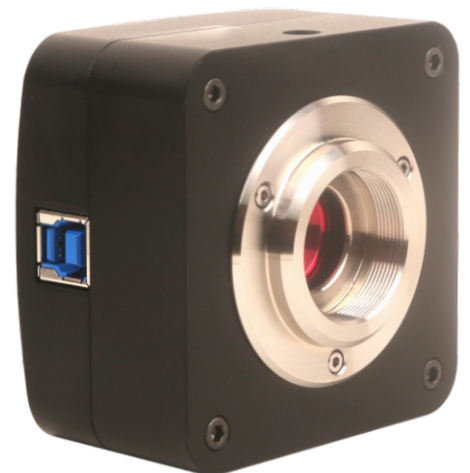
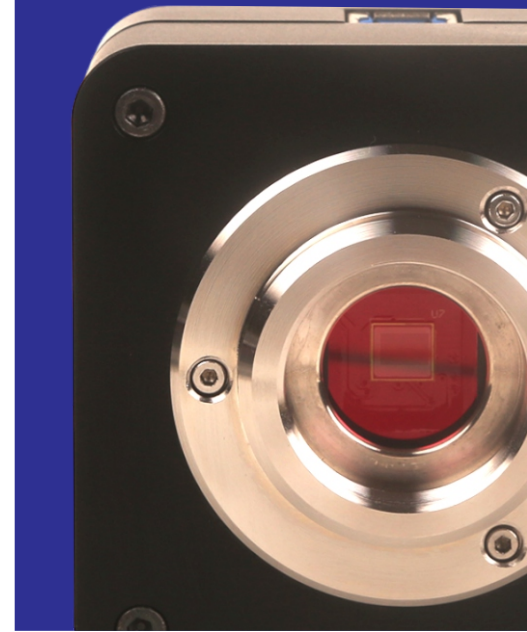
### Features:

- Standard C-Mount camera with Aptina or Panasonic CMOS sensor;
- With hardware resolution among 16M to 18M;
- Ultra-fine™ HISP VP and USB3.0 5 Gbps interface ensuring high frame rates (Up to 13 frames for 18M Resolution)
- CNC aluminum alloy housing;
- USB3.0 5Gbps interface ensuring high speed data transmission;
- Ultra-Fine color engine with perfect color reproduction capability;
- With advanced video & image processing application ToupView;
- Windows/Linux/macOS/Android multiple platform SDK;

### Technical Specification:

- **Order Code:** UC-20
- **Sensor & Size(mm):** 20M/AR2020©, with a size of 1/1.8" (7.17x5.38)
- **Pixel(μm):** Each pixel measures 1.4x1.4 micrometers
- **G Sensitivity Dark Signal::** 8.4 ke-/lux.sec
- **FPS/Resolution:**
  - > 20 frames per second at 5120x3840 resolution
  - > 45 frames per second at 2560x1920 resolution
  - > 137 frames per second at 912x686 resolution
- **Binning:** Supports binning at 1x1, 2x2
- **Exposure:** Exposure time ranges from 0.2 ms to 1500 sec.
- **Image format:** BMP, JPEG, RAW, TIFF, AVI

# ULTRACAM UC-20



## Sample Images Captured with ULTRACAM UC-20







## 25 Mega Pixel Camera (USB 3.0)

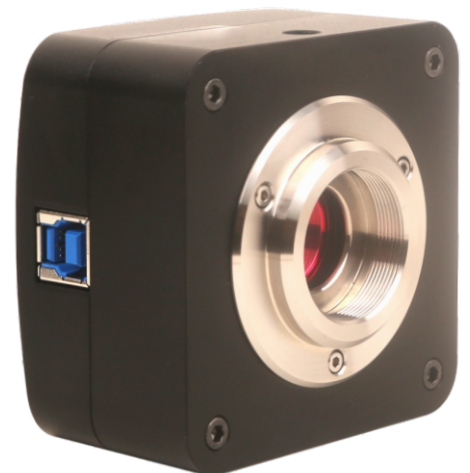
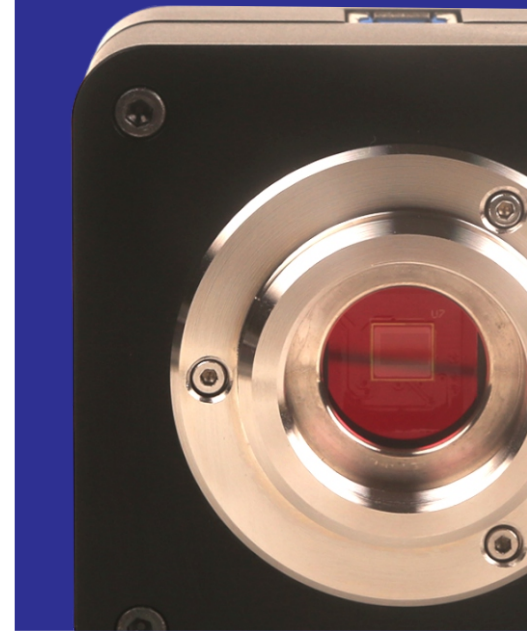
### Features:

- SONY Exmor Back-illuminated CMOS sensor with USB3.0 interface;
- Real-time 8/12/14/16bit depth switch(depending on sensor);
- Super high sensitivity up to 2350mV(IMX385);
- Ultra low noise and low power dissipation;
- With hardware resolution among 1.5M to 20M;
- Rolling Shutter or Global Shutter; Standard C-Mount camera; CNC aluminum alloy housing;
- With advanced video & image processing application ToupView;
- Ultra-fine Color hardware Color Engine ensuring high frame rates(Up to 15 frames for 20M Resolution);
- Windows/Linux/macOS/Android multiple platform SDK;

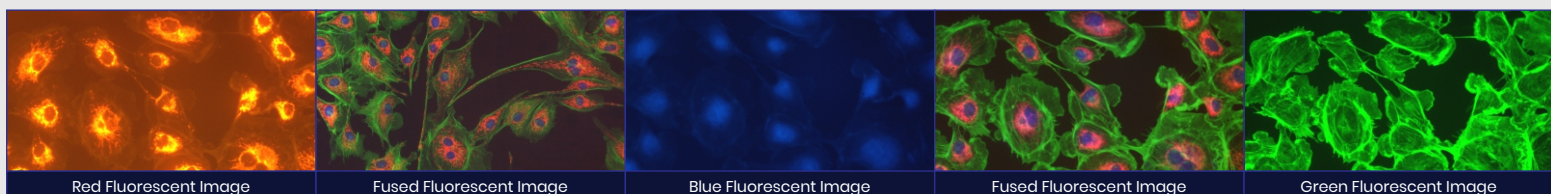
### Technical Specification:

- **Order Code:** UC-25
- **Sensor & Size(mm):** 25M/IMX511©, with a size of 1/2.3"(5.519x5.519)mm.
- **Pixel(μm):** Each pixel measures 1.12x1.12 micrometers
- **G Sensitivity Dark Signal::** 96.3mv with 1/30s & 0.1mv with 1/30s
- **FPS/Resolution:**
  - > 12 frames per second at 4928x4928 resolution
  - > 46 frames per second at 2464x2464 resolution
  - > 100 frames per second at 1648x1648 resolution
- **Binning:** Supports binning at 1x1, 2x2, 3X3
- **Exposure:** Exposure time ranges from 0.013 ms to 15 sec.
- **Image format:** BMP, JPEG, RAW, TIFF, AVI

# ULTRACAM UC-25



## Sample Images Captured with ULTRACAM UC-25



Red Fluorescent Image

Fused Fluorescent Image

Blue Fluorescent Image

Fused Fluorescent Image

Green Fluorescent Image





# 5 Mega Pixel Camera

(HDMI+USB 2.0+WiFi+SD Card All in 1 CMOS Camera)

## Features:

- All in 1 (HDMI+USB 2.0+WiFi+SD card) C-mount camera with high sensitivity CMOS sensor;
- Simultaneous HDMI & WIFI output;
- Built-in mouse control;
- Built-in image capture & video record to SD card;
- Built-in camera control panel for mouse control;
- Built-in toolbar including zoom, mirror, comparison, freeze, cross, browser functions;
- Built-in image & video browsing, display & play;
- Ultra-Fine color engine with perfect color reproduction capability(USB);
- With advanced video & image processing application ToupView, ;
- Support standard SDK for Windows/Linux/macOS/Android(USB);
- CNC shell molding design;

## Technical Specification:

- **Order Code:** QHD-5
- **Sensor & Size(mm):** Sony IMX178©, 1/1.8" (6.22x4.67)
- **Pixel(μm):** 2.4x2.4
- **G Sensitivity:** 425 mv with 1/30s
- **Dark Signal:** 0.15 mv with 1/30s
- **FPS/Resolution:**
  - > 30 FPS at 1920x1080 (via HDMI)
  - > 25 FPS at 1920x1080 (via WiFi)
- **Binning:** 1x1
- **Exposure:** Ranges from 0.03ms to 918ms
- **Image format:** BMP, JPEG, RAW, TIFF, AVI



## Sample Images Captured with QHD-5





## 5 Mega Pixel Camera

(Auto-focus+HDMI+USB 2.0+WIFI+SD Card All in 1 CMOS Camera)

### Features:

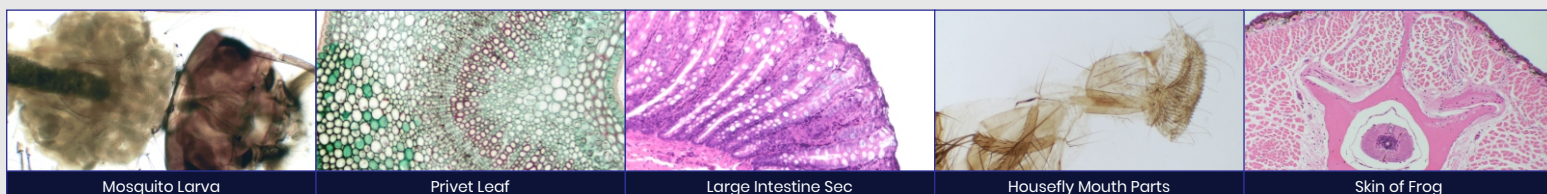
- All in 1 (HDMI+USB 2.0+WiFi) C-mount camera with Sony high sensitivity CMOS sensor;
- 1920 × 1080 (1080P) video resolution;
- Record 1080P video (ASF format) into SD card;v
- 5~2M resolution captured image (XFCAM1080PHB/PHD);
- HDMI/WiFi output simultaneously;
- Auto/Manual focus with the movement of the sensor;
- For HDMI output, XCamView is used to control the camera;
- For WiFi output, ToupView/ToupLite is used to control the camera;
- Ultra-Fine Color Engine with perfect color reproduction capability (WiFi);
- With advanced video & image processing application ToupView/ToupLite;
- Windows/Linux/OSX/Android multi-platform SDK;
- CNC Camera housing;

### Technical Specification:

- **Order Code:** QHD-5AF
- **Sensor & Size(mm):** Sony IMX178©, 1/1.8" (6.22x4.67)
- **Pixel(μm):** 2.4x2.4
- **G Sensitivity:** 425 mv with 1/30s
- **Dark Signal:** 0.15 mv with 1/30s
- **FPS/Resolution:**
  - > 30 FPS at 1920x1080 (via HDMI)
  - > 25 FPS at 1920x1080 (via WiFi)
- **Binning:** 1x1
- **Exposure:** Ranges from 0.03ms to 918ms
- **Image format:** BMP, JPEG, RAW, TIFF, AVI



## Sample Images Captured with QHD-5AF





# 8 Mega Pixel Camera

(HDMI+USB 3.0+SD Card All in 1 C-mount CMOS Camera)

## Features:

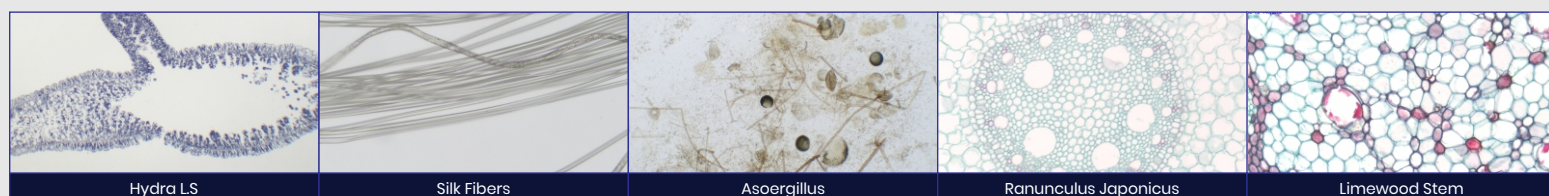
- All in 1 (HDMI+USB 3.0+SD card) C-mount camera with high sensitivity CMOS sensor;
- Simultaneous HDMI & USB 2.0 output;
- Built-in mouse control;
- Built-in image capture & video record to SD card;
- Built-in camera control panel for mouse control;
- Built-in toolbar including zoom, Mirror, Comparison, Freeze, Cross, Browser Functions;
- Built-in image & video browsing, display & play;
- Ultra-Fine color engine with perfect color reproduction capability(USB 2.0);
- With advanced video & image processing application ToupView, ;
- Support standard UVC for Windows/Linux/Mac(USB);
- CNC shell molding design;

## Technical Specification:

- **Order Code:** QHD-8U
- **Sensor & Size(mm):** Sony IMX236©, 1/2.8" (5.38x3.02)
- **Pixel(μm):** 2.8x2.8
- **G Sensitivity:** 510 mv with 1/30s
- **Dark Signal:** 0.15 mv with 1/30s
- **FPS/Resolution:**
  - > 30 FPS at 1920x1080 (via HDMI)
  - > 30 FPS at 1920x1080 (via USB)
- **Binning:** 1x1
- **Exposure:** Ranges from 0.1ms to 999ms
- **Image format:** BMP, JPEG, RAW, TIFF, AVI



## Sample Images Captured with ULTRACAM QHD-8U







# QHD-84K

## 8 MP 4K Ultra HD Camera

(HDMI+USB 3.0+LAN+Wifi) Multi-outputs C-mount  
CMOS Camera)

### Features:

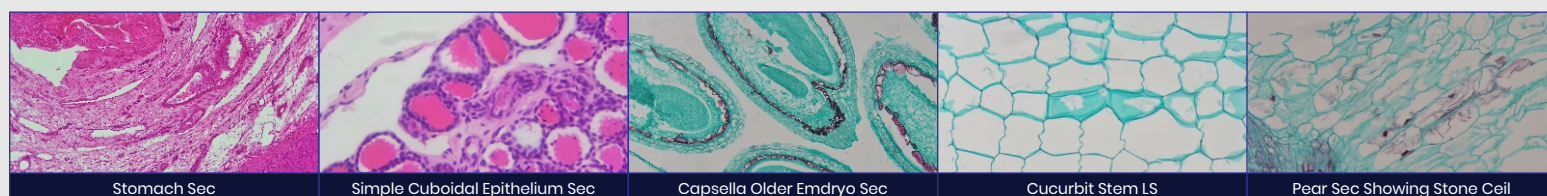
- Sony Exmor/STARVIS back-illuminated CMOS sensor
- 4K HDMI/ NETWORK/ USB multiple video outputs
- 4K/1080P auto switching according to monitor resolution
- SD card/USB flash drive for captured image and video storage, support local preview and playback
- Embedded XCamView for the control of the camera and image processing
- Excellent ISP with local tone mapping and 3D denoising
- ToupView/ToupLite software for PC
- iOS/Android applications for smart phones or tablets

### Technical Specification:

- **Order Code:** QHD-84K
- **Sensor & Size(mm):** 4K/Sony IMX334©, 1/1.8"(7.68x4.32)
- **Pixel(μm):** 2.0x2.0
- **G Sensitivity:** 505 mv with 1/30s
- **Dark Signal:** 0.13 mv with 1/30s
- **FPS/Resolution:**
  - > 30 FPS at 3840x2160 (via HDMI)
  - > 30 FPS at 3840x21600 (via LAN)
  - > 30 FPS at 3840x2160 (via USB)
- **Binning:** 1x1
- **Exposure:** Ranges from 0.04ms to 1000ms
- **Image format:** BMP, JPEG, RAW, TIFF, AVI



## Sample Images Captured with ULTRACAM QHD-84K





# QHD-164K

## 16 MP 4K Ultra HD Camera

(HDMI+USB 3.0+LAN+Wifi) Multi-outputs C-mount CMOS Camera)

### Features:

- Sony STARVIS 2 back-illuminated CMOS sensor
- 4K HDMI/ NETWORK/ USB multiple video synchronous outputs
- 4K/1080P auto switching according to monitor resolution
- High frame rate output, supporting up to 4K 75fps
- Support 4K 60fps low delay HDMI output mode, with an average delay of 40ms
- SD card/USB flash drive for captured image and video storage, support local preview and playback
- New browsing function, providing rich file operations
- Excellent ISP with local tone mapping and 3D denoising
- Provide two sets of default ISP parameters for biological and stereo microscope
- Embedded XCamView for the control of the camera control, image processing and measurements
- ToupView/ToupLite software for PC
- iOS/Android applications for smart phones or tablets

### Technical Specification:

- **Order Code:** UC-164K
- **Sensor & Size(mm):** Sony IMX283©, with a size of 1/1.1"(13.06x7.34)
- **Pixel(μm):** Each pixel measures 2.4x2.4 micrometers
- **G Sensitivity Dark Signal::** 1847mv with 1/30s, 0.84mv with 1/30s
- **FPS/Resolution:**
  - > 20 frames per second at 5440x3060 resolution
  - > 30 frames per second at 2688x1512 resolution
  - > 30 frames per second at 1920x1080 resolution
- **Binning:** Supports binning at 1x1
- **Exposure:** Exposure time ranges from 0.104 ms to 1000 sec.
- **Image format:** BMP, JPEG, RAW, TIFF, AVI



## Sample Images Captured with ULTRACAM UC-164K

